

BELOW COUNTER INSTALLATION PREPARATION FOR THE AUXILIARY TAP

This installation uses a separate, counter-mounted auxiliary tap. With the **eSpring™** Water Treatment System below the counter, this installation allows maximum use of counter space, with no visible tubing.

Cold water supply must be modified with a tee with connection to an isolation valve ① that provides a 1/2" male NPT (National Pipe Thread) connection for the included hose nipple (Fig. 17). See next steps for details.

NOTE: You will need an electrical outlet to plug in the power adapter. If you need to install a new outlet, it must be installed by a licensed or certified electrician according to state and local laws. This outlet must be powered continuously for the system to function properly. In case of a power outage.

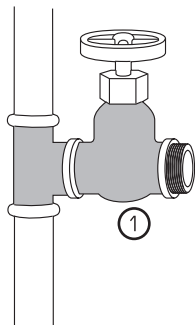
RECOMMENDATIONS

1. Hire a plumber to modify the plumbing and install the auxiliary tap.
2. Determine type and size tubing or piping needed between the cold water supply line and the kitchen tap.
3. Install a tee in cold water supply and a separate shut-off valve to the tee before connection of an auxiliary tap. This will allow for rinsing and cleaning of the water purifier during cartridge changes.
 - a. All fittings and valves must be approved for use in pressurized drinking water applications.
 - b. Purchase plastic ferrules (tubing rings) when connecting plastic tubes to metal compression fittings (note that metal ferrules are generally used when connecting metal to metal).
4. Select a location for the auxiliary tap. There may already be an extra, capped hole in your sink's ledge for a sprayer, soap dispenser or extra tap that can be used for mounting the auxiliary tap. If you are removing the connected sprayer, it will need to be sealed properly. (See local plumbing store for assistance).
5. If a new hole is needed, it must be between 32 mm and 38 mm in diameter, less than 100 mm from the sink basin and at least 32 mm from the wall. Before drilling, **make sure** there is sufficient clearance below the sink or countertop to accommodate the auxiliary tap and allow connections to be made to the **eSpring** Water Purifier.

CAUTION: For solid countertops, it is recommended to use a very sharp bi-blade hole saw and start by making a pilot hole. If you have a porcelain/ceramic sink or a tile countertop, it is recommended to seek professional assistance for proper drilling.

WARNING: Due to the possibility of shock or electrocution, use extreme care when operating an electric power drill or other power tools around the sink. Avoid contact with water or moisture at all times.

IMPORTANT: If you suspect that your water pressure exceeds 860 kPa, a plumber needs to install a pressure regulating device.

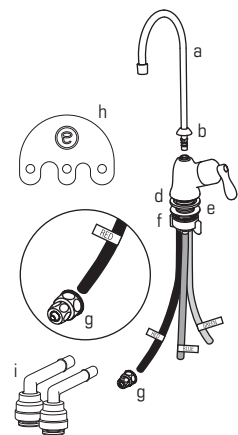


BELOW COUNTER AUXILIARY TAP INSTALLATION

REVIEW ALL INSTRUCTIONS TO BE SURE YOU HAVE ALL PARTS AND TOOLS PRIOR TO INSTALLATION.

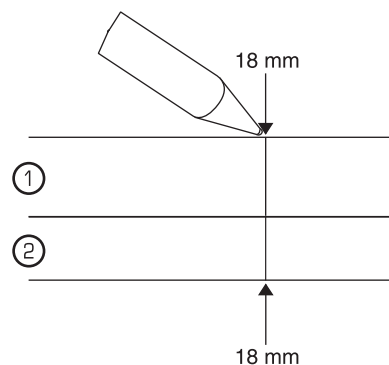
Auxiliary Tap Components

- a. Spout
- b. Spout cap
- c. Body with red, green and blue tubes
- d. Rubber washer
- e. Metal washer
- f. Wing nut
- g. Hose nipple
- h. Tubing Removal Tool
- i. Elbows

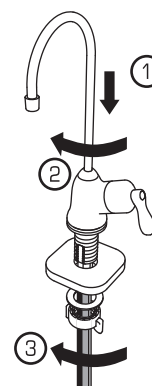


NOTE: Hose nipple contains a flow controller that is essential for proper operation.

1. Lay the GREEN tube ① on the top of the diagram, and lay the BLUE tube ② on the bottom. Use a pen to mark them at the arrows

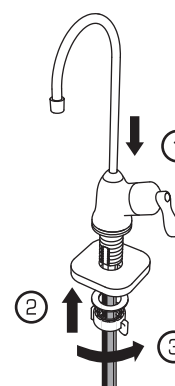


2. Press auxiliary tap spout into the main body ①. And screw spout cap onto faucet body to ②. Unscrew to remove the wing nut and metal washer while keeping the rubber washer against the tap body ③.

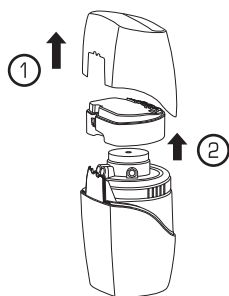


3. Holding the rubber washer in place against the tap body, lower the auxiliary tap stem and tubes through the hole in the sink ledge or counter ①. With an assistant holding the tap in place, reach up from below the counter and slide the metal washer, then the wing nut onto the threaded tap stem ②. Position the tap in the desired orientation and tighten the metal washer and wing nut to secure the tap in place ③.

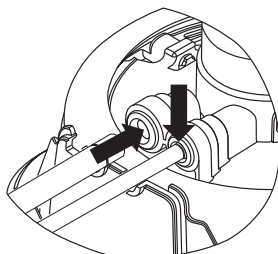
NOTE: If the tap remains loose, an additional spacer may be required. Contact Customer Service



4. **Remove** the top shroud from the water treatment system (1). **Remove** the electronic module (2).

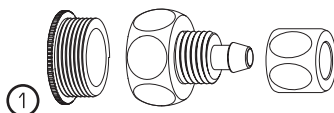


5. **Insert** the GREEN and BLUE tubes attached to the auxiliary tap into the elbows and insert the elbows their proper locations on the bracket.



NOTE: There will be resistance before the tubes are fully installed. Ensure the tubes are pushed into the elbows until they meet the marks and make sure the elbows are fully inserted into the filter bracket.

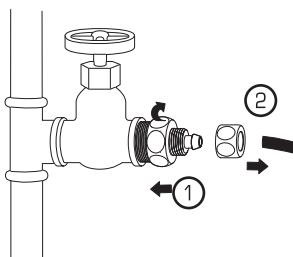
6. **Unscrew** the plastic shipping plug (1) from the hose nipple and **discard**.



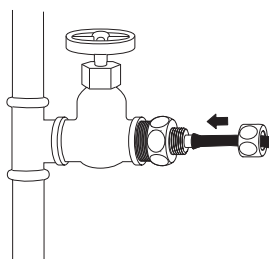
7. **Attach** the hose nipple to the shutoff valve with 1/2" male NPT* already installed using plumber's tape* (1). Tighten hose nipple with a wrench.

8. **Remove** nut from hose nipple and **slide** onto the red hose (2).

*not included with the system



9. **Push** red hose over barb on hose nipple and **tighten** nut with a wrench. **Ensure** all connections are leak free.

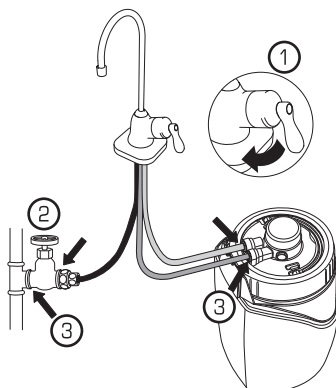


10. **Open** the auxiliary tap (1). **Open** the water supply shut-off valve to start water flowing through the system (2).

WARNING: It will take a short time for water to saturate the cartridge and flow from the auxiliary tap. Flush for a minimum of 20 liters (approximately 5-15 minutes) to remove air pockets and carbon dust. If water is not clear, see Troubleshooting in owners manual

11. **Turn off** the auxiliary tap and **check** for any signs of leakage at all tubing connections (3). (Fig. 26). If there is leaking or bubbling, refer to Troubleshooting, p. 6. In owners manual.

NOTE: During use periodically check system for leaks.



Amway™

1033758