

# NUTRILITE™ General Health (整体健康辅助品)



**New Advanced DOUBLE X**  
全新Nutrilite DOUBLE X  
121696 Tray (186 tabs)

121697 Refill (186 tabs)

Provide optimal amounts of vitamins, minerals and beneficial phytonutrients for nutritional insurance.



427200  
**Daily**  
综合维生素和矿物质  
(180 softgels)

Provide the daily nutrients, vitamins and minerals to meet daily needs.



**All Plant Protein Powder**  
全素蛋白质粉  
110415 (450g)

122594 (900g)  
Exclusive tri-blend of soy, wheat and pea. Keeps your body energetic and functioning at optimal level.

102578  
**Green Tea Protein**  
绿茶味蛋白质粉 (450g)

Protein with the added refreshing taste of green tea.

100325  
**Mixed Berries Protein**  
浆果味蛋白质粉 (450g)

Provides high-quality protein, calcium and vitamin C.

117580  
**Chocolate Protein**  
巧克力味大豆蛋白 (450g)

Provides high-quality protein and calcium.

126567  
**Joint Booster With Protein**  
关节灵蛋白质粉 (450g)

Provides 3 plant proteins, 2 plant peptides and 1 hyaluronic acid to improve joint lubrication and reduce discomfort, build and strengthen joint muscles.



**Salmon Omega Complex**  
鲑鱼奥美加复合精华  
100066 (60 softgels)

103208 (120 softgels)  
Aids in the normal growth, development and function of the nervous system.



110606  
**Cal Mag D Plus**  
加镁D钙片 (180 tabs)

With added vitamin D, Cal Mag D Plus provides optimum nutrients and minerals for stronger, healthier bones.



119293  
**Nutrilite Mixed Collagen Peptide Drink**  
综合胶原蛋白肽饮品 (5g X 30 sticks)

Supports the growth of healthy skin, hair and nails, antioxidant properties.



592411  
**Iron-Folic**  
铁和叶酸 (120 tabs)

Iron folic aids in formation of red blood cells.



110171  
**Vitamin B Dual-Action**  
双效维生素 B (120 tabs)

Helps in the development of red blood cells, and normal functioning of the nervous system.



125341  
**Probiotic for Women**  
女士益生菌 (2g X 30 sticks)

Provides 10 billion CFU of clinically supported probiotic lactobacillus strains shown to benefit feminine health.



120571  
**Balance Within™ Probiotic**  
强效复合益生菌  
(1.5g X 30 sticks)

Contains an exclusive blend of 6.3 billion CFU from 5 probiotic strains, supporting immunity and healthy digestion.



312462  
**Nutrilite Mixed Soy Protein & Lecithin With Vitamin E**  
大豆蛋白质卵磷脂维E

Soy lecithin emulsifies fat for healthy circulation, helping regulate cholesterol levels & Vitamin E protects the fat in our body tissues from oxidation.

**Vegetarian Root extract Milk Based**

# NUTRILITE™ Weight Management (体重管理辅助品)



124492  
**BodyKey Meal Replacement Shake-Café Latte**  
咖啡牛奶  
(51g X 14 pouches)

Café Latte flavour. A well balanced nutritious meal packed in a convenient pouch.



124489  
**BodyKey Meal Replacement Shake-Berry**  
浆果  
(51g X 14 pouches)

Berry flavour. A well balanced nutritious meal packed in a convenient pouch.



124490  
**BodyKey Meal Replacement Shake-Chocolate**  
巧克力  
(51g X 14 pouches)

Chocolate flavour. A well balanced nutritious meal packed in a convenient pouch.



124493  
**BodyKey Meal Replacement Shake-Milk Tea**  
奶茶味  
(51g X 14 pouches)

Designed to provide you with all the 22 essential vitamins, 17g protein, 5g fiber, and 370mg calcium your body needs to meet 1/3 of your daily nutrition. Available in 4 delicious flavours!



104402  
**Mixed Fibre Chewable**  
多种纤维咀嚼片  
(60 tabs)

Aids in regulating bowel movement and increase feeling of fullness.



117085  
**Slimmetry**  
绿纤脂  
(60 tabs)

Increase energy expenditure thus increase body metabolism rate.



008600  
**Glucose Health**  
平衡糖  
(120 caps)

Optimize body's metabolism.



102736  
**Mixed Fiber Powder**  
综合纤维粉  
(4.5g x 30 sticks)

Contains a unique trio blend of soluble fibres: inulin, resistant maltodextrin and guar gum. Aids in relieving constipation, normalise bowel movements and maintain good gut health.

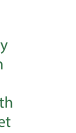


103050  
**CB Plus**  
天然纤维锭  
(90 tabs)

A natural carbohydrate inhibitor. Contain kidney beans and soy bean extract.



Helps to reduce body weight and maintain a healthy waistline when used along with a reduced-calorie diet and exercise program.



Maintains healthy blood sugar level and weight management.

# NUTRILITE™ PhytoPowder™



118891  
**PhytoPowder™ Electrolyte Orange**  
鲜橙味 (360g)

A nutritious beverage with phytonutrients from lemon, sea buckthorn, pineapple and pomegranate.



118892  
**PhytoPowder™ Refresh Lemon**  
柠檬味 (360g)

A nutritious beverage with phytonutrients from lemon, sea buckthorn, pineapple and pomegranate.



118893  
**PhytoPowder™ Refresh Lemon**  
樱桃味 (360g)

A nutritious beverage with vitamin C and zinc from acerola cherries.

**Vegetarian Root extract Milk Based**

# NUTRILITE™ Antioxidants (抗氧化物)



**Lecithin-E**  
卵磷脂 E  
425300 (150 tabs)  
103209 (270 tabs)

Lecithin aids the digestion of vitamin E, leading to better, much effective absorption by your body.



102992  
**Concentrated Fruits and Vegetables**  
浓缩水果和蔬菜  
(60 tabs)

A hassle free way to get the phytonutrients your body needs. Get 10+ servings of fruits and vegetables in 2 tablets.



**Vitamin C Extended Release**  
长效维他命C营养片  
109745 (60 tabs)  
109747 (180 tabs)

An antioxidant that aids in maintaining healthy bones, and helps in wound healing.



101156  
**CoEnzyme Q10 Plus**  
综合辅酶 Q10 Plus  
(60 caps)

Aids in converting food into energy and helps in maintaining heart health.



109536  
**Multi Carotene**  
综合胡萝卜素  
(60 softgels)

Provide anti-oxidative effects and aids in improving vision.

# NUTRILITE™ Children's Health (儿童健康辅助品)



421700  
**Kids 4-in-1**  
儿童综合4合1  
营养辅助品  
(100 tabs)

Provides vitamins and iron essential for growth and for maintaining body needs.



430201  
**Kids Calcium Magnesium**  
钙与镁咀嚼片  
(100 tabs)

In the early years of a child's development calcium is vital in maintaining good bone health.



123046  
**Kids Flavoured Gummy**  
儿童有味DHA藻油软糖  
(1g x 30 stick packs)

Provides support for your child's immune system with Vitamin C, Vitamin D, Zinc, and Probiotic exclusively ALL IN ONE product!



124373  
**Kids Flavoured Gummy**  
with DHA  
儿童有味DHA藻油软糖  
(4g x 30 gummies)

DHA supplement is thought to enhance the brain function & vision in children. Each gummy provides 50mg DHA.

**Vegetarian Root extract Milk Based**

# NUTRILITE™ Herbal Supplement (草药辅助品)



300475  
**Botanical Beverage Mix Cherry with Licorice and Turmeric**  
樱桃甘草和姜黄综合植物饮料  
(5g x 30 sticks)

Packed with vitamin C, licorice and turmeric, to give you that extra boost in healthy immunity and supports anti-inflammatory functions.



592300  
**Garlic with Licorice**  
大蒜和甘草 (150 tabs)

Provides antioxidants and phytonutrients for general well being.



100106  
**Triple Guard Echinacea**  
三重防护松果菊  
(60 tabs)

Helps to build body's natural resistance.



123843  
**Immunity Pack**  
免疫力保健包  
(20 packets)

An easy and convenient way to support your immune system all day with 500mg Vitamin C and provides strong,



102735  
**Clear Guard**  
鼻康膏 (180 tabs)

A formula that uses a synergistic combination of premium plant concentrates acerola cherry, cinnamon and



104664  
**Joint Health**  
健络精华 (120 tabs)

A powerful blend of 7 ingredients to help maintain joint health and improve range of motion and joint movement.



102188  
**CH Balance**  
绿茶精华 (60 softgels)

Help maintain healthy cholesterol levels.



104144  
**Vision Health with Lutein**  
晶明锭 (62 tabs)

To support normal vision and maintain healthy eye tissues.



111106  
**M-Plus Tablet**  
M-Plus 锭片 (60 tabs)

A unique nutritional supplement combining 2 key herbs that provide short term and long term benefits to the brain.



008006  
**PMS Women's Health**  
经前综合女性软胶囊 (120 softgels)

Provides nutritional support for a woman's well being during her menstrual cycle.



808500  
**Black Cohosh and Soy**  
黑升麻和黄豆 (90 tabs)

Helps menopausal women cope with this challenging phase.



008004  
**Prostate Health**  
前列腺软胶囊 (100 softgels)

Promotes normal prostate function and urinary flow for men.



101831  
**Milk Thistle and Dandelion Plus**  
奶蓟与蒲公英 (60 tabs)

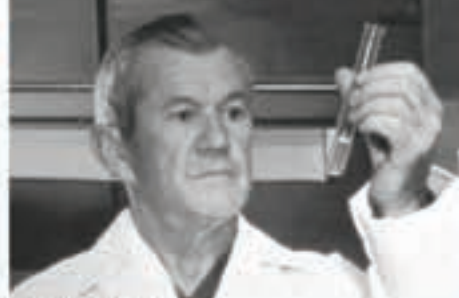
Helps in the protection and maintenance of good liver health.

**Vegetarian Root extract Milk Based**



## Celebrating 80 Years of Optimal Health

Carl Rehnborg, founder of the Nutrilite Brand and the pioneer in the global vitamin, mineral and dietary supplement industry was a man of vision. He found out, when he was in China during the revolution, that plants contained and provided the essential nutritional elements - known as phytonutrients, that are often missing or lacking from the diet.



Phytonutrients are the vitamins, mineral complexes, fibre and anti-oxidants found in many colourful fruits and vegetables. The nutritional role of phytonutrients is not completely understood but we do know they are created by plants to protect themselves from harm.

In 1934, after several years of experimenting, he created what is considered to be the very first multivitamin / multimineral product.

Since then, Nutrilite has led the way in developing high-quality innovative health supplements that combine the best of nature and the best of science. Due to our unique production and scientific research, we are able to ensure that phytonutrients are found in more Nutrilite products than any other supplement brand.

**WINE!**

**Goatbeaver - Bells - Berenjena - Madrocca - Orans - Pear - White Kidney Beans**

Key Phytonutrients: **Allyl-sulphur - Quercetin**

Functions: **Strengthens healthy bones and a healthy circulatory system.**

**ORANGE**

**Carrot - Cam - Grapefruit - Lemon - Orange - Papaya - Peach - Fruit - Pineapple**

Key Phytonutrients: **Alpha-carotene - Beta-carotene - Beta-cryptoxanthin - Beta-sitosterol**

Functions: **Promotes eye health and immune system while keeping cells hydrated.**

**GREEN**

**Broccoli - Green Beans - Green Peppers - Green Tea - Kale - Lettuce - Soy Beans - Spinach**

Key Phytonutrients: **EGCG - Lutein - Quercetin - Sulfolignane - Isoflavones**

Functions: **Promotes cellular health, heart and vision health, and maintains healthy liver function.**

**RED**

**Cherries - Guava - Sweet Pink Guava - Pomegranate - Ruby - Raspberries - Red Apple - Tomato - Watermelon**

Key Phytonutrients: **Lycopene - Ellagic Acid**

Functions: **Promotes heart, cell, and prostate health, and help maintain strong bone health.**

**PURPLES**

**Banana - Blackberries - Blackberries - Blueberries - Eggplant - Grapes - Plum**

Key Phytonutrients: **Anthocyanins - Resveratrol**

Functions: **Support brain and heart health.**

## NUTRILITE IS THE WORLD'S #1 SELLING VITAMIN AND DIETARY SUPPLEMENT BRAND.\*

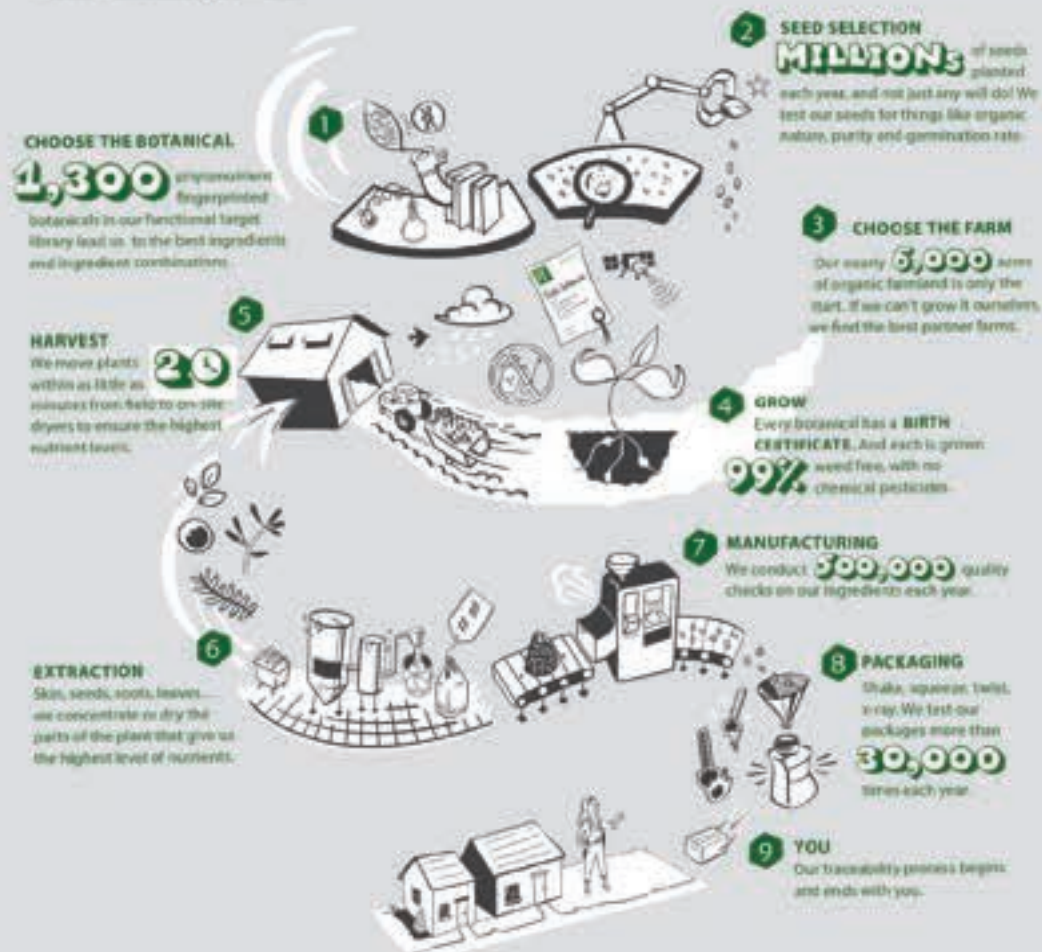
\*Source: Euromonitor International Limited; Vitamins and Dietary Supplements, World GBN, Retail Value RSP, % breakdown, 2019 data.

### Halal Certified

All NUTRILITE products (including soft gel products) are certified Halal by the Islamic Food & Nutrition Council of America (IFANCA). IFANCA is recognised by Majelis Ulama Islam Singapura (MUIS) as an Islamic body that issues Halal Certification for meat and products for export into Singapore. Besides Singapore, Halal Certification issued by IFANCA is also recognised in other Muslim countries.

# GO Behind THE Label

Follow our outrageously detailed 9-step traceability process that brings you the purest, safest and most effective Nutrilite supplements.



Recommendation of products by the NUTRILITE Health Experience Nutritionists is for consideration only.

Amway Singapore reserves the right to amend the NUTRILITE Health Experience and its terms and conditions without prior notice.  
 寶善堂所推售之產品仅供参考，如有更改恕不另行通知。NUTRILITE 健康体验馆保留修改之权利，恕不另行通知。

© Copyright Amway (Singapore) Pte. Ltd. (197902465G), 2023. All Rights Reserved.

**Amway**

Amway City Shop  
331 North Bridge Road  
#01 - 01/01 Odeon Towers  
Singapore 188720  
Email: sgforum@amway.com  
Website: www.amway.sg



NUTRILITE™

BEST OF NATURE

# NUTRILITE HEALTH EXPERIENCE

BEST OF SCIENCE



## Health and Lifestyle Questionnaire (保健和生活方式问卷)

Name (姓名): \_\_\_\_\_ ABO No: \_\_\_\_\_ Date (日期): \_\_\_\_\_

Gender (性别): M / F (男/女) Year of Birth (出生年份): \_\_\_\_\_ Age (年龄): \_\_\_\_\_

Metallic Implants (金属内植物): Yes / No (有/无)  
Pregnant (怀孕) / Breastfeeding (母乳): Yes / No (是/否)

- Are you on a special diet? (Example, Vegetarian) Yes / No  
您有任何特别饮食计划吗? (例如是素食者) 是/否
- Do you have any allergy / medical conditions / family history of medical problems? Yes / No  
您有任何过敏 / 医疗状况 / 家族病史吗? 有/无
- Are you on any medications currently? Yes / No  
目前您有进行任何药物治疗吗? 有/无
- Do you take any supplements? Yes / No  
您有吃什么营养辅助品吗? 有/无
- Do you smoke? Yes / No  
您有抽烟吗? 有/无
- How often do you drink alcohol? Yes / No (Daily / Weekly / Monthly / Socially)  
您多久喝一次酒? 有/无 (每天 / 每周 / 每月 / 社交应酬)
- Do you exercise? Yes / No  
您有运动吗? 有/无

## Guide to Blood Pressure Level (血压水平指南)

Blood Pressure (血压): \_\_\_\_\_ / \_\_\_\_\_ Heart rate (心率): \_\_\_\_\_ (Normal: 60-80 bpm)

SYSTOLIC (收缩压)	DIASTOLIC (舒张压)	CATEGORIES (分类)
< 90	< 60	Hypotension (低血压)
90 - 99	60 - 64	Low Normal (低正常)
100 - 129	65 - 84	Normal (正常)
130 - 139	85 - 89	High (高) - Normal (正常)
140 - 159	90 - 99	Mild hypertension (轻度高血压)
160 - 179	100 - 109	Moderate hypertension (中度高血压)
> 180	> 110	Severe hypertension (严重高血压)