



BUILD YOUR BUSINESS WITH ALP

Enjoy all the benefits of the Amway Loyalty Programme (ALP) upon online subscription! Simultaneously, expand your customer network and grow your Amway business with ALP.

Did you know that with the Amway Loyalty Programme (ALP), this will help you attract more customers and grow your business?



Really?!
Tell me more!



Subscribe to any Needs-based Solutions for 6 consecutive months to enjoy great savings!



CONVENIENCE AT YOUR DOORSTEP

MONTH
1

MONTH
2

MONTH
3

MONTH
4

MONTH
5

MONTH
6

With the new mechanics, ABOs can now **enjoy full PV & BV every month** and APCs are also **rewarded with AMPoints**.

Get
***Up to 20%**
Amway Product
eCoupon

Get
***Up to 50%**
Amway Product
eCoupon



SUBSCRIBE

Your desired product solution for 6 months



Enjoy ***Up to 20%**
Amway Product
eCoupon in the 4th
month



Enjoy ***Up to 50%**
Amway Product
eCoupon in the 6th
month



FREE DELIVERY

Convenient
doorstep delivery



FLEXI-ALP

Easy manage on your
ALP order



AUTO-RENEWAL

Easy Auto-Renewal to
continue enjoy products
solutions & benefits



DOWNLINE DETAILS & SUBSCRIPTIONS

Make better forecast plans with upcoming
PV/BVs for increased business growth.
Available for Platinums & Above



ALL-NEW

Needs-Based Solutions

Subscribe to your favourite solutions to help address your needs. From foundational health, immunity boost, heart health, weight management, bone and joint health and more! For your wellness journey. Every step of the way.

FOUNDATIONAL HEALTH



All Plant Protein



Protein Duo



Foundational Duo

SOLUTION-BASED



Healthy Meal



Healthy Gut



Healthy Heart



Healthy Weight



Blood Glucose



Bone & Joint



Healthy Skin



Women Health



Immunity Boost



Click on any Product Images to shop on amway.sg now

Sounds interesting!
But, how does this
benefit me and my
business?



Here's why you
should subscribe and
use it as a platform
to grow your Amway
business.

**SUSTAINABLE
CUSTOMERS**



**GUARANTEED
MONTHLY
ORDERS**



**BUSINESS
NETWORK
EXPANSION**

via New Prospects



**POSITIVE
BUSINESS
GROWTH**



**HOW WILL ALP
GROW MY
BUSINESS?**



STEP 1

BECOME AN ALP INFLUENCER



Subscribe to ALP Plan* with minimum 100PV/200BV and get 3 of your APCs to do the same:



Healthy Meal

2x BodyKey by Nutralite Meal Replacement
= PV57.4 | BV114.8



Foundational Health

1x Nutralite All Plant Protein 900g
= PV42.6 | BV85.2

*This Plan is an example. For illustration purposes only.

ME

I am a 3-percenter!

"ME" achieved 3% performance bonus and is entitled to 7% CSI Incentives!

PPV: 400PV (VCPV 300)
PBV: 800BV (VCBV 600)



VCPV [100PV]

VCPV [100PV]

VCPV [100PV]

Performance Bonus:

800BV x 3% = \$24

CorePlus CSI:

600BV x 7% = \$42

Total Incentives:

\$24 + \$42 = \$66

Month 1	Month 2	Month 3	Month 4 (20%)	Month 5	Month 6 (50%)
\$66	\$66	\$66	\$66 + \$40	\$66	\$66 + \$100

Total Bonus (After 1 Completed ALP Cycle): **\$536.00**

STEP 2

BECOME AN ALP BUSINESS BUILDER



Subscribe to ALP Plan with minimum 100PV/200BV and get 3 of your APCs to do the same. Duplicate and help 3 of your downline ABOs to do the same:

ME



PPV: 400PV (VCPV 300)
PBV: 800BV

I am a **6-percenter!**
Total Group PV/BV:
1,600PV/3,200BV

"ME" achieved 6% performance bonus and is entitled to 4% CSI Incentives!



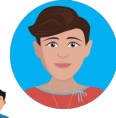
3%

PPV 400
PBV 800



3%

PPV 400
PBV 800



3%

PPV 400
PBV 800

Personal Performance Bonus:

$$200\text{BV} \times 6\% = \$12$$

Differential Bonus:

$$800\text{BV} \times 3\% \times 3 = \$72$$

Core Plus CSI:

$$600\text{BV} \times 4\% = \$24$$

Total Incentives:

$$\$12 + \$72 + \$24 = \$108$$

Month 1	Month 2	Month 3	Month 4 (20%)	Month 5	Month 6 (50%)
\$108	\$108	\$108	\$108 + \$40	\$108	\$108 + \$100

Total Bonus (After 1 Completed ALP Cycle): **\$788.00**

STEP 3

BUILD BRONZE FOUNDATION



Subscribe to ALP Plan with minimum 100PV/200BV and get 3 of your APCs to do the same. Duplicate and help 3 of your downline ABOs to do the same. Increase another 150PV:

ME



PPV: 550PV (VCPV 300)
PBV: 1,100BV

I am a 9-percenter!
Total Group PV/BV:
1,750PV/3,500BV

"ME" achieved 9% performance bonus and is entitled for CSI Incentives & Bronze Foundation Incentive (BFI).



3%



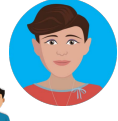
PPV 400
PBV 800



3%



PPV 400
PBV 800



3%



PPV 400
PBV 800

Personal Performance Bonus:
 $1,100BV \times 9\% = \$99$

Differential Bonus:
 $800BV \times 6\% \times 3 = \144

Core Plus CSI:

$600BV \times 1\% = \$6.00$

Core Plus BFI:

$\$243 \times 25\% = \60.75

Total Incentives:

$\$99 + \$144 + \$6 + \$60.75 = \$309.75$

Month 1	Month 2	Month 3	Month 4 (20%)	Month 5	Month 6 (50%)
\$309.75	\$309.75	\$309.75	\$309.75 + \$40	\$309.75	\$309.75 + \$100

Total Bonus (After 1 Completed ALP Cycle): **\$1,858.50**

STEP 4

GO BRONZE



Subscribe to ALP with minimum 100PV /200BV and get 3 of your downline APCs do the same. Help 3 of your downline ABOs to build Bronze Foundation:

ME

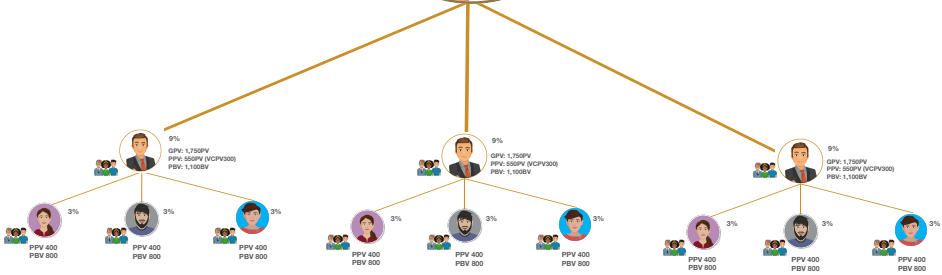


PPV: 550PV (VCPV 300)
PBV: 1,100BV



I am a **15-percenter!**
Total Group PV/BV:
5,800PV/11,300BV

"ME" achieved 15% performance bonus and is entitled for Core Plus+ Early Incentives - Bronze Foundation Incentive (BFI) & Bronze Builder Incentive (BBI).



Personal Performance Bonus:

$$1,100BV \times 15\% = \$165$$

Differential Bonus:

$$3,500BV \times 6\% \times 3 = \$630$$

Core Plus BFI:

$$\$795 \times 25\% = \$198.75$$

Core Plus BBI:

$$\$795 \times 35\% = \$278.25$$

Total Incentives:

$$\$165 + \$630 + \$198.75 + \$278.25 = \$1,272$$

Month 1	Month 2	Month 3	Month 4 (20%)	Month 5	Month 6 (50%)
\$1,272	\$1,272	\$1,272	\$1,272 + \$40	\$1,272	\$1,272 + \$100

Total Bonus (After 1 Completed ALP Cycle): **\$7,772.00**

STEP 5

GO PLATINUM



Subscribe to ALP with minimum 100PV /200BV and get 3 of your downline APCs do the same. Help 3 of your downline ABOs to achieve Bronze:

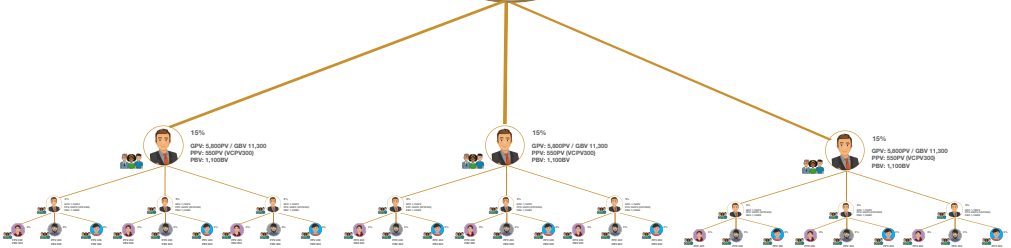
ME

PPV: 550PV (VCPV 300)
PBV: 1,100BV



I am a 21-percenter!
Total Group PV/BV:
17,950PV/35,900BV

"ME" achieved 21% performance bonus, Coreplus performance plus 2% and is entitled for Core Plus+ Early Incentives - Bronze Foundation Incentive (BFI) & Bronze Builder Incentive (BBI).



Personal Performance Bonus:

$$1,100BV \times 21\% = \$231$$

Differential Bonus:

$$5,800BV \times 6\% \times 3 = \$1,044$$

Performance Plus:

$$35,900 \times 2\% = \$718$$

Core Plus BFI:

$$\$1,275 \times 25\% = \$318.75$$

Core Plus BBI:

$$\$1,275 \times 35\% = \$446.25$$

Total Incentives:

$$\$231 + \$1,044 + \$718 + \$318.75 + \$446.25 = \$2,758$$

Month 1	Month 2	Month 3	Month 4 (20%)	Month 5	Month 6 (50%)
\$2,758	\$2,758	\$2,758	\$2,758 + \$40	\$2,758	\$2,758 + \$100

Total Bonus (After 1 Completed ALP Cycle): **\$16,688.00**

Add-Ons:

- Platinum Pin Qualification
- Core Plus TTCl: \$2,450
- Core Plus PGGI: \$7,650 x 35% = \$2,677.50
- Invitation to Langkawi NPS

Wow! Sounds good!
How do I start?



Just subscribe to the plan online and start duplicating! Here are the steps...

1 Login to
www.amway.sg



2 Select your favourite solutions from our ALP product list.



3 For quick and easy payments, subscribe your desired product solution for 6 months.



4 Get up to *70% worth of Amway Product eCoupons when you complete 6 months subscription.



5 Enjoy FREE delivery to your home each month. *2-3 days after successful payment.
*Refer to the delivery schedule



Need More Info?

To subscribe or to find out more information, visit
www.amway.sg/sopProducts

Show, Teach and Duplicate to grow your Amway business!

*Terms and conditions apply

Amway[™]

© Copyright Amway (Singapore) Pte. Ltd. (197902465G), 2023. All Rights Reserved.